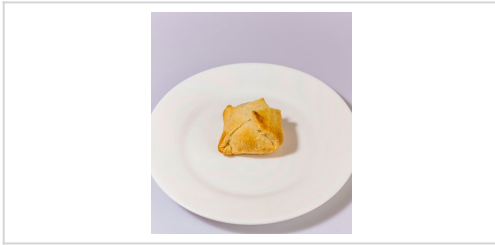




FOODSERVICE

MADE TO SERVE



PEPPERIDGE FARM® APPLE DUMPLINGS

Case Code
11306

Pack & Size
96/3.1 OZ



Pepperidge Farm Dumplings puff into luscious layers of golden pastry, wrapped around delectable fruit fillings.

Nutrition Facts

Serving Size	1 DUMPLING (85g/3oz)
Amount Per Serving	
Calories 220	Calories from Fat 90
% Daily Value	
Total Fat 10g	15%
Saturated Fat 5g	25%
Trans Fat 0g	
Cholesterol 0mg	0%
Sodium 300mg	13%
Total Carbohydrate 29g	10%
Dietary Fiber 1g	4%
Sugars 13g	
Protein 3g	
Vitamin A 6%	Vitamin C 2%
Calcium 0%	Iron 6%

* Percent Daily Values are based on a 2,000 calorie diet. Nutrition Facts are based on our current data. However, because the data may change from time to time, this information may not always be identical to the Nutrition Facts table found on the labels of products.

INGREDIENTS

MADE FROM: APPLES, UNBLEACHED ENRICHED WHEAT FLOUR (FLOUR, NIACIN, REDUCED IRON, THIAMINE MONONITRATE [VITAMIN B1], RIBOFLAVIN [VITAMIN B2], FOLIC ACID), WATER, VEGETABLE OILS (PALM, SOYBEAN, HYDROGENATED COTTONSEED), SUGAR, HIGH FRUCTOSE CORN SYRUP, CONTAINS 2 PERCENT OR LESS OF: MODIFIED CORNSTARCH, SALT, MONO AND DIGLYCERIDES, CINNAMON, SOY LECITHIN, MALTED BARLEY FLOUR, TURMERIC AND ANNATTO EXTRACTS FOR COLOR.

FEATURES AND BENEFITS

Coming soon

SERVING IDEAS

Enhance breakfast menus or serve as an elegant dessert, topped with vanilla ice cream, or feature on dessert carts and serve at coffee breaks.

PREPARATION

Baking Instructions: Keep Frozen until ready to bake. Avoid high bottom heat. Bake an inch or so apart on ungreased baking sheet in preheated 380 degree oven. Check 25 - 30 minutes. Continue baking until golden brown, but no longer than 35 minutes. Cool for twenty minutes on wire rack. Serve warm. Convection Oven Baking Instructions: Preheat oven to 350 degrees. Turn fan on. Take directly from freezer and place on sheet pan 3x5 (15) and bake at 350 degrees 12-15 minutes.

HANDLING

KEEP FROZEN UNTIL READY TO BAKE

STORAGE

Shelf Life: 1 YEAR FROZEN

Storage Temperature: 0F

MORE

Coming soon

PACKAGING DETAILS

Pack & Size: 96/3.1 OZ	Case Weight: 20 LB	UPC: 51000113061
Cube: 0.650 FT	Case Size: 12.625IN x 10.25IN x 8.625IN (L x W x H)	SCC-14: 10051000113068

ALLERGENS

SOY, WHEAT

SPECIAL DIETARY NEEDS

250 calories or less per serving; Kosher Certified; Sodium 141 - 480 mgs.