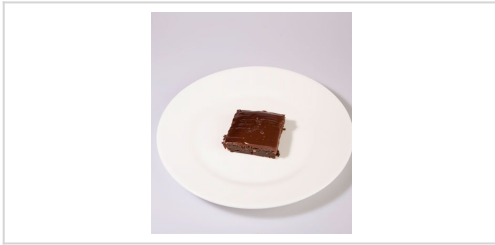




FOODSERVICE

MADE TO SERVE®

# PEPPERIDGE FARM® CLASSIC ICED DECADENT BROWNIE



<b>Case Code</b> <b>07513</b>	<b>Pack &amp; Size</b> <b>80/ 2.6 OZ</b>
----------------------------------	---



Our tantalizing rich Classic Iced Brownies are loaded with California Walnuts and layered with a rich coat of super fudge icing, our brownies are sure to delight your customers!

Nutrition Facts	
Serving Size	1 BROWNIE (74g/2.6oz)
Amount Per Serving	
Calories 330	Calories from Fat 130
% Daily Value	
<b>Total Fat</b> 15g	<b>23%</b>
<b>Saturated Fat</b> 6g	<b>29%</b>
<b>Trans Fat</b> 0g	
<b>Cholesterol</b> 25mg	<b>9%</b>
<b>Sodium</b> 170mg	<b>7%</b>
<b>Total Carbohydrate</b> 45g	<b>15%</b>
<b>Dietary Fiber</b> 5g	<b>19%</b>
<b>Sugars</b> 30g	
<b>Protein</b> 3g	
Vitamin A 0%	Vitamin C 0%
Calcium 0%	Iron 15%

\* Percent Daily Values are based on a 2,000 calorie diet. Nutrition Facts are based on our current data. However, because the data may change from time to time, this information may not always be identical to the Nutrition Facts table found on the labels of products.

## FEATURES AND BENEFITS

Pepperidge Farm® Brownies are precut for portion control and convenience. Cut these brownies versus Sara Lee and Awreys. Pepperidge Farm® Ice Brownies are more rich and chewy than our primary competitors, and are pre-cut.

## SERVING IDEAS

These delicious brownies are perfect for many dessert occasions, including ice cream offerings.

## PREPARATION

Thaw for 1-1/2 to 2 hours at room temperature. Do not remove plastic over wrap until thawed.

## HANDLING

HOLD IN FREEZER UNTIL READY TO SERVE. STORE UNUSED PORTION IN AIRTIGHT CONTAINER AT ROOM TEMPERATURE. ROOM TEMPERATURE SHELF-LIFE IS 2 DAYS.

## STORAGE

Shelf Life: 6 MONTHS FROZEN

Storage Temperature: 0F

## MORE

Pepperidge Farm® Brownies are precut for portion control and convenience. Cut these brownies versus Sara Lee and Awreys. Pepperidge Farm® Ice Brownies are more rich and chewy than our primary competitors, and are pre-cut.

## PACKAGING DETAILS

<b>Pack &amp; Size:</b> 80/ 2.6 OZ	<b>Case Weight:</b> 14.95 LB	<b>UPC:</b> 51000075130
<b>Cube:</b> 0.760 FT	<b>Case Size:</b> 14.125IN x 9.5IN x 9.75IN (L x W x H)	<b>SCC-14:</b> 10051000075137

## ALLERGENS

ALLNUTS, EGG, SOY, WHEAT

## SPECIAL DIETARY NEEDS

Sodium 141 - 480 mgs.

## INGREDIENTS

MADE FROM: SUGAR, BLEACHED ENRICHED WHEAT FLOUR [FLOUR, NIACIN, IRON, THIAMIN (VITAMIN B1), RIBOFLAVIN (VITAMIN B2), FOLIC ACID], VEGETABLE OILS (CANOLA, SOYBEAN, PALM AND PALM KERNEL), CORN SYRUP, WHOLE EGGS, COCOA PROCESSED WITH ALKALI (DUTCHED), WALNUTS, CONTAINS 2 PERCENT OR LESS OF: HIGH FRUCTOSE CORN SYRUP, EGG WHITES, SALT, MONO AND DIGLYCERIDES, POLYSORBATE 60, POTASSIUM SORBATE (TO RETARD SPOILAGE), SOY LECITHIN, CITRIC ACID, NATURAL AND ARTIFICIAL FLAVORS, BAKING POWDER (CORNSTARCH, SODIUM ALUMINUM PHOSPHATE, BAKING SODA). THIS PRODUCT HAS BEEN PROCESSED ON EQUIPMENT THAT PORCESSES PRODUCTS CONTAINING OTHER TREE NUTS.