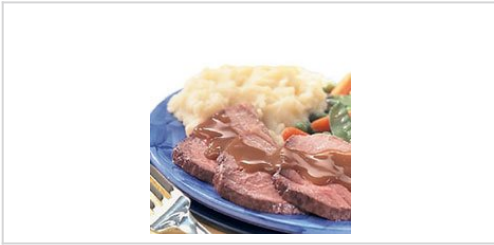




FOODSERVICE

MADE TO SERVE



# SWANSON® BEEF BROTH

Case Code  
**27016**

Pack & Size  
**12 / 49.5 OZ**



Swanson(R) broth is the perfect choice for creating mouthwatering meals that are not only easy to prepare but also lower in fat. Cooking tips included on label. • This soup is part of our Classics Collection.

## Nutrition Facts

Serving Size 1 CUP (240 ML)

Amount Per Serving

Calories 10 Calories from Fat

% Daily Value

**Total Fat** 0g **0%**

**Saturated Fat** 0g **0%**

**Trans Fat** 0g

**Cholesterol** 0mg **0%**

**Sodium** 830mg **36%**

**Potassium** 30mg **0%**

**Total Carbohydrate** 1g **0%**

**Dietary Fiber** 0g **0%**

**Sugars** 1g

**Protein** 2g

Calcium 0% Iron 0%

\* Percent Daily Values are based on a 2,000 calorie diet. Nutrition Facts are based on our current data. However, because the data may change from time to time, this information may not always be identical to the Nutrition Facts table found on the labels of products. Information is true and accurate as of: 05/07/2018

## INGREDIENTS

INGREDIENTS: BEEF STOCK, CONTAINS LESS THAN 2% OF: SALT, NATURAL FLAVORING, YEAST EXTRACT, CARROTS, CELERY, ONIONS, CANE SUGAR.

## FEATURES AND BENEFITS

Swanson broth is the perfect ingredient for all of your favorite recipes! 99% fat free No Added Preservatives No Added MSG No High Fructose Corn Syrup No Artificial Flavors No Colors from Artificial Sources

## SERVING IDEAS

• For more flavorful dishes, use Swanson broth instead of water, when simmering vegetables, rice, potatoes or pasta • When roasting, baste with Swanson broth for moist, tender, flavorful meats • Swanson broth also makes a great soup starter • Visit SwansonBroth.com

## PREPARATION

Do not dilute. Pour contents into saucepan. Heat slowly until hot, stirring occasionally.

## HANDLING

PROMPTLY REFRIGERATE ANY UNUSED PORTION IN A SEPARATE CONTAINER.

## STORAGE

Shelf Life: 2 YEARS; USE BY DATE ON THE TOP OF EVERY CAN

Storage Temperature: 65F

## MORE

Swanson broth is the perfect ingredient for all of your favorite recipes! 99% fat free No Added Preservatives No Added MSG No High Fructose Corn Syrup No Artificial Flavors No Colors from Artificial Sources

## PACKAGING DETAILS

<b>Pack &amp; Size:</b> 12 / 49.5 OZ	<b>Case Weight:</b> 42.62 LB	<b>UPC:</b> 51000270160
<b>Cube:</b> 0.918 FT	<b>Case Size:</b> 17IN x 12.875IN x 7.25IN (L x W x H)	<b>SCC-14:</b> 10051000270167

## SPECIAL DIETARY NEEDS

100 calories or less per serving; 15 grams total carbohydrates or less per serving; 250 calories or less per serving; 9 grams total carbohydrates or less per serving; Low Fat; Sodium 481 - 800 mgs.